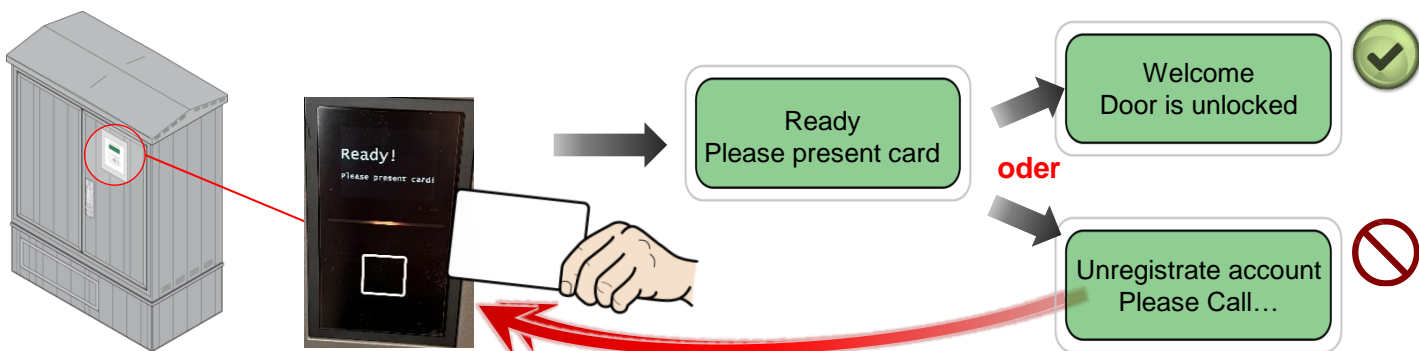


## Generate energy supply

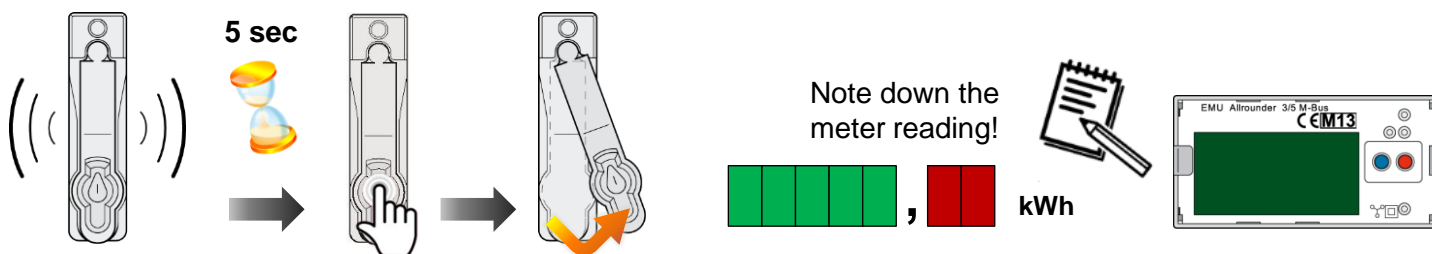
The connection may only be created by trained personnel!

### Log on



### Open doors and take meter reading

The operator must be informed immediately of any damage or irregularities!



### Establish a connection

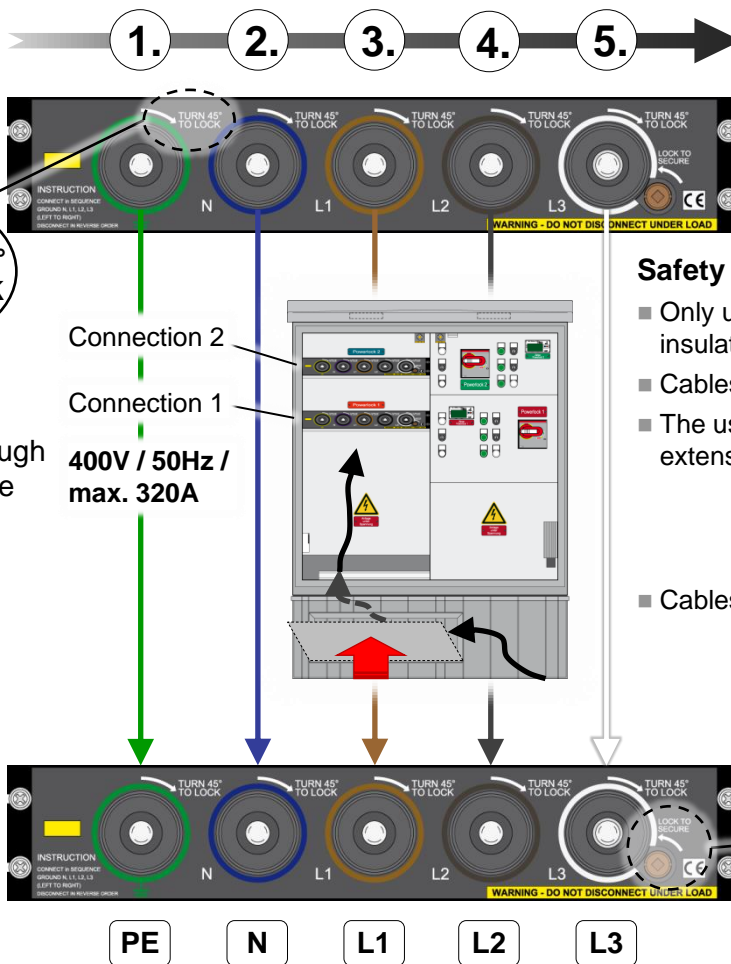
I. Connect energy cables on the ship.



TURN 45° TO LOCK

II. Feed the energy cables through the cable opening in the base of the energy terminal.

III. Connect energy cables to the energy terminal.



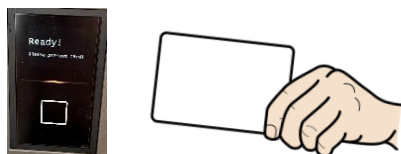
Establish a direct and permanent connection.

#### Safety precautions:

- Only use heavy-duty rubber-insulated cables.
- Cables must be undamaged!
- The use of adapters or extension leads is not permitted.
- Cables must be strain-relieved.



## Hold the card again



## Switch on the power supply

Freigabe Powerlock  
Einschalt-bereit  
30 min

Anschluss 1 und / oder Anschluss 2

- Switch the main switch on the ship over to shore power.
- Repeat for Powerlock 2 step 1+2
- Keep the doors closed throughout the energy supply process.

## Disconnect energy supply

### Switch off power supply and log off

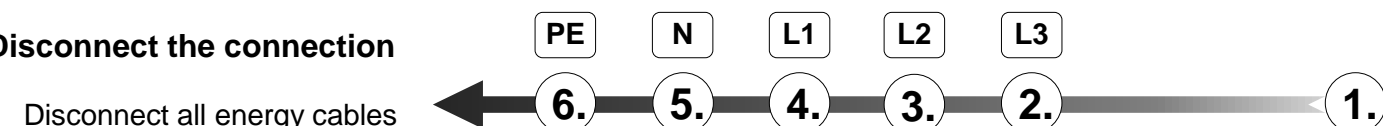
- Switch the main switch on the ship to self-supply.

Power available!

- ✓ All control lights switched off.
- ✓ The energy supply is now disconnected.

### Disconnect the connection

- I. Disconnect all energy cables on the energy terminal.



TURN 45° TO UNLOCK

INSTRUCTION: CONNECT IN REQUESTOR GROUND N, L1, L2, L3 LEFT TO RIGHT DISCONNECT IN REVERSE ORDER

TURN 45° TO LOCK

LOCK TO SECURE

WARNING - DO NOT DISCONNECT UNDER LOAD

Unlock energy cables.

- II. Pull the energy cables out through the cable opening in the base of the energy terminal and close the cable feedthrough opening.

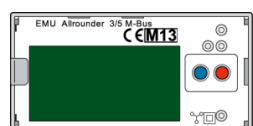
- III. Release all connection cables on the side of the ship.

TURN 45° TO LOCK

WARNING - DO NOT DISCONNECT UNDER LOAD

### Take meter reading and leave the energy terminal

- Take the current meter reading and compare with the value noted prior to the energy supply.



- Close and lock the doors of the energy terminal.

